

Undercover Rod Holder

This rod holder is intended to carry fishing rods and reels in a secure position above the truck bed just under your bed cover. It can be used without the bed cover as well but in a less secure condition.

This minimizes the potential for damage to the reels, rods and rod tips, keeps equipment out of the weather, allows for transport of multiple rods and reels letting you select rods depending on the type of fishing for the day or carry rods for buddies. Rods may remain in the vehicle for extended periods of time. For long duration storage, additional cushioning for handles is recommended. No need to open the bed cover to remove or add rods. Open the tailgate to load or unload. Trucks with locking tailgates provide extra security. Rods remain out of site and away from thieves.

The rod holder accommodates varying lengths of rods, useable lengths depending on the length of your truck bed. It is not suitable for use in a 4' truck bed. A 6' truck bed may accommodate 6' or shorter rods. An 8' truck bed may accommodate 8' or shorter rods. Two-piece rods unassembled, may also be carried.

It is possible to carry rods slightly longer than the truck bed if you lengthen the bridle rings by using 3" or 4" threaded rods and coupling nuts and load them at an angle. One set of 3" extensions is included in the package. Additional parts may be ordered on the webpage or at any major hardware store. A picture of this assembly is shown at the end of these instructions. This additional step will allow you to carry a rod near 6' 8" in a 6' bed or 8' 8" in an 8' bed, when loaded at an angle.

There are no guarantees made regarding the security, damages to equipment or injury during the assembly or use of this product. It is understood that the mechanical skills to assemble and use this product is possessed by the purchaser and or user.

UNDERCOVER ROD HOLDER

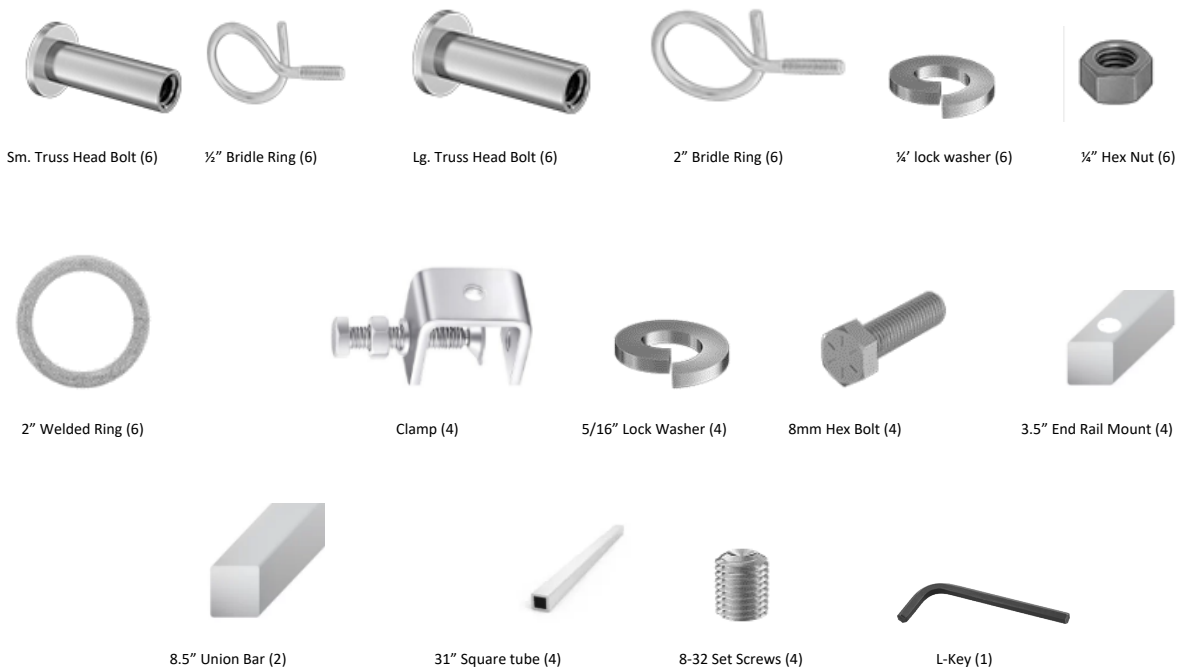


DISCRETE COVERT SECURE

Undercover Rod Holder Assembly Instructions

Parts list

There are four 31" aluminum square tubes in the package. Each segment has 3 holes for the truss head bolts and a small hole for the set screw. The square tubes, when mounted, will need to be measured and the square tube may need to be trimmed using a hacksaw to fit the width and position in your particular truck.



Assembly

Position clamps and tighten them on the side rails of the truck bed. The front clamp should be positioned on the side rail near the middle of the truck bed. The rear clamps should be positioned 9 to 12 inches from the closed tailgate. Take care not to position clamps where they will interfere with any mechanisms which hold the bed cover in place. Tighten each clamp on the side rails and lock them in place with the hex nut and lock washer.



Fasten one of the 3.5" end rail mounts to the bottom each clamp on the side rail of the truck, using the 8mm bolts and large lock washer. Make this finger tight so they may swivel and move during further assembly.

Assemble Square Tube Rod Holder Bars

Front Square Tube

The two front square tubes have the larger 5/16" diameter holes and larger bridle rings. One at a time, insert each 5/16" diameter truss head bolt through the square tube. Spin a hex nut to the end of the threads on a 2" bridle ring and then add a large lock washer on top of it.

Thread the bridle rings with nut and lock washer into the truss head bolt which is inserted through the square tube.

Note: See Figure 1 shows assembled, Figure 2 shows the individual parts.



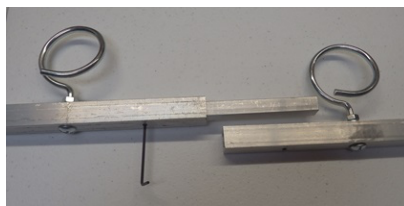
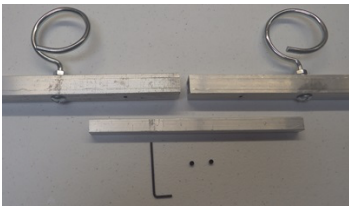
Figure 1



Figure 2

Tighten the bridle ring into the truss head bolt and then tighten nut and washer to lock the bridle ring in place, parallel to the square tube.

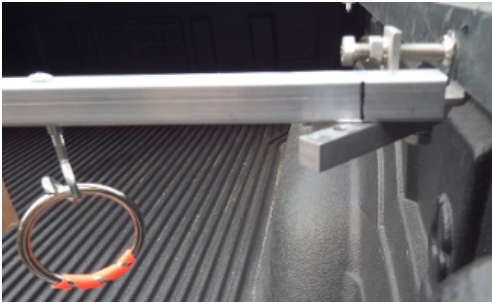
When all six bridle rings are installed, start a set screw in the hole at the end of each 31" square tube. Insert the 8.5" square bar to join the tubes together. Tighten the set screws to hold the two square bars securely together.



Next, slide one end of the assembled square tube onto the end rail mount at one side of the truck bed.



Swing the square tube to the other side of the truck bed and mark it for cutting. Make a mark as in the picture. This needs to be cut to match the width of your truck at the position where you set your mounts. Truck widths vary depending on the location of the bar so this cannot be precut by us. Leave about 1/2" gap between clamp body and end of square tube assembly to accommodate bed flex. You can temporarily install the end rail mount while marking but will need to remove it to do the final install of the square tubing.



When cut, remove the 3.5" end rail mount on that end, insert the end rail mount into the square tube, thread the bolt into the base of the clamp and tighten the 8mm bolts and lock washers on both sides.

Rear Square tube

The rear square tube has the smaller 1/4" holes. Follow the same assembly and installation procedure as the front square tube. These small bridle rings do not have lock washers or nuts as they must rotate freely. Install clamps, measure the length of the square tube as before and cut to the desired length. Install the rear bar in the same manner as the front bar. Firmly tighten these bridle rings and truss head bolts with screw driver and pliers, or they will unthread due to vibration during travel.



To use

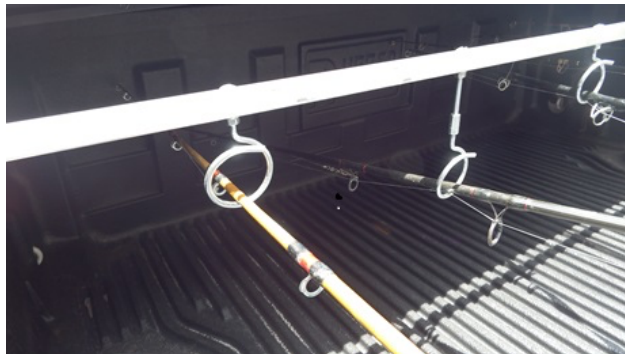
Open the tailgate. Place tip of rod through the front 2" bridle ring. Place the 2" welded ring over the rod handle. Move the rod forward and hang the 2" welded ring on the 1/2 inch bridle ring.



Rods which are slightly longer than the length of the truck bed may be carried on the rod holder. A union nut and stud are used to lower a rod so it will cross under or hang below the others. Mounting the rod at an angle after this adjustment allows rods slightly longer than your truck bed to be carried at an angle. See following pictures.



Two-piece rods may be carried if front and rear square tubes are positioned to fit the two-piece rods. When loaded they may shift forward or back and will need to be firmly attached to the 2" ring at the back.



It is not necessary to open the truck bed cover to load and unload rods. Rods and reels are easily loaded and unloaded through the open tailgate. They are show here with the bed cover open for easy viewing.



With modification, rods slightly longer than the truck bed may be carried if loaded at an angle. Using fully threaded studs of desired length and coupling nuts, you can hang rods lower than the rods loaded straight in, to accommodate those slightly longer rods. Studs and coupling nuts are available at most major hardware stores or on this website. One set of 3" threaded rods and coupling nuts are included.



Note: Over time, you may notice minor wear where your rods rest on bridle rings. If this is something that bothers you, it is recommended that you wrap some cushioning material on the bottom of 2" bridle ring on the front bar. I have had rods loaded in my truck for over two years with medium weight reels and have only minor compression of foam handle rods on the welded ring on the rear bar.